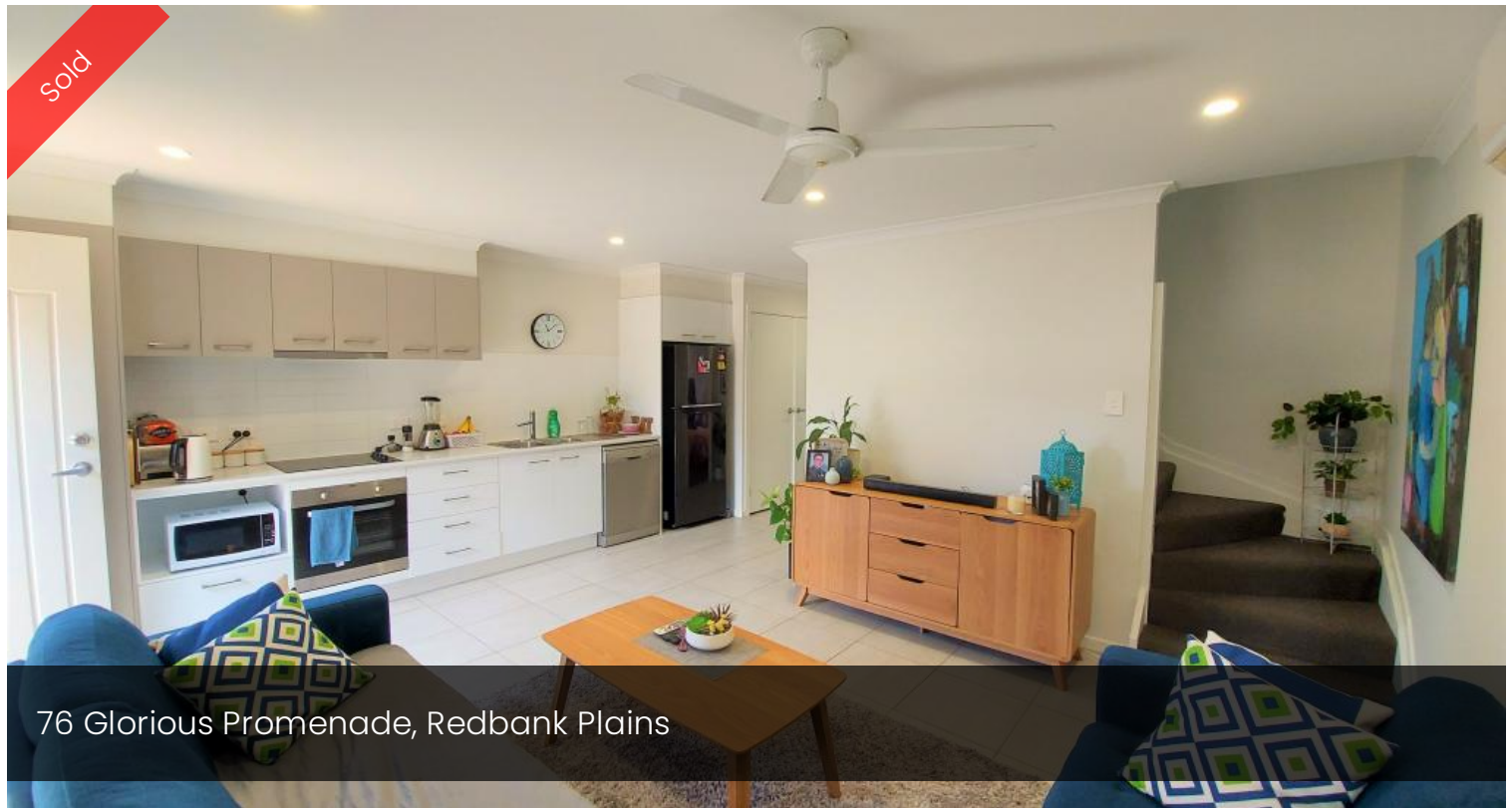


Sold



76 Glorious Promenade, Redbank Plains



### Price Drop!! Stylish Low Maintenance Townhouse

Are you looking for a townhouse with no maintenance and No Body Corp?

This stylish 2 bedroom townhouse is the ultimate combination of modern living with security and privacy. Set back behind the street view of the garage - you find your way through a private entrance to a huge courtyard giving a feeling of space and tranquility.

With a comfortable and clever design this home comes with everything you could need including large rooms filled with light. When living here you are also ideally located close to restaurants, Redbank Plains Shopping Centre, parks and sporting grounds, Springfield Lakes facilities and highway access to Brisbane.

Features of this amazing home include:

- \* 2 spacious bedrooms with ceiling fans and generous builtin robes
- \* Master bedroom with ensuite on 2nd level
- \* 2nd bedroom on ground level opens up to private courtyard at back
- \* Large Kitchen with s/steel appliances including dishwasher

2 2 1

Price SOLD for \$269,000

Property Type Residential

Property ID 379

Agent Details

Kerrin Farmer - 0412 198 066

Office Details

Shield Management

3/76 Grange Road Eastern Heights, QLD, 4305 Australia  
(07) 3389 7177



- \* Tiled Open Plan Living downstairs with Reverse Cycle Air Con
- \* Study nook at top of internal stairs
- \* Single lock up garage
- \* It doesn't get any more Low maintenance than this!
- \* Currently tenanted at \$270pw

DON'T DELAY on this one – the market is moving and quality homes such as this do not last long. CALL ME to arrange your private inspection.

Follow Us on Facebook & Instagram.

COVID RESTRICTIONS: Due to the restrictions currently in place due to the Coronavirus outbreak, viewings for properties will be kept to a minimum. As per health regulations any persons entering any property are required to check in using the Qld App. We will be following the recommended social distancing protocols and ask that you do the same. Please make sure you always carry a mask, along with wearing one within the property as per restrictions as and when required. Shield Management apologises for any inconveniences caused but is required to follow all government guidelines within the confines of the restrictions in place for the health and safety of all.

DISCLAIMER: Whilst Shield Management has taken every care in the preparation of the information contained in this advertisement is true and correct, we accept no responsibility and disclaim all liability in respect to any errors, omissions, inaccuracies, or misstatements contained. Any interested parties should make their own inquiries to verify the information contained in this advertisement.

The above information provided has been furnished to us by the vendor/s. We have not verified whether or not that information is accurate and do not have any belief in one way or the other in its accuracy. We do not accept any responsibility to any person for its accuracy and do no more than pass it on. All interested parties should make and rely upon their own inquiries in order to determine whether or not this information is in fact accurate.