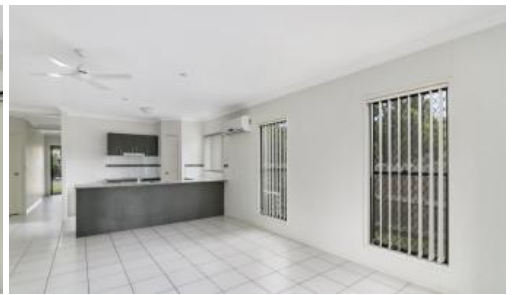


Leased



9 Gladstone Road, Sadliers Crossing



## APPLICATIONS CLOSED

APPLICATIONS CLOSED. This huge home provides plenty of space for the whole family including 2 separate living areas and room for a trampoline & swing set in the back yard!

Located within minutes to Ipswich CBD, shops, primary and secondary schools, train station and so much more.

Features include:

- » 4 generous bedrooms with built in robes + WIR in Main
- » Separate lounge room + huge open plan living/dining/kitchen
- » Reverse cycle air con in the family room & main bedroom
- » Spacious kitchen with SS dishwasher
- » Tiled living areas
- » Remote double garage
- » Undercover pergola
- » Security screens on all doors and windows
- » Fully fenced
- » Low maintenance, level yard
- » Pets considered upon application at owners discretion

🛏 4 🚿 2 🚿 2

Price	\$380 per Week
Property Type	Rental
Property ID	433

### Agent Details

Shield Management - 07 3389 7177

### Office Details

Shield Management  
3/76 Grange Road Eastern  
Heights, QLD, 4305 Australia  
(07) 3389 7177



INQUIRE NOW - THIS PROPERTY WONT LAST LONG!

Follow Us on Facebook & Instagram.

Shield Management utilises 2 Apply for all Tenant applications. If you are unable to apply through the link on any ad, application forms can be downloaded from our website under the Tenant Info page [www.shieldmanagement.com.au/tenants](http://www.shieldmanagement.com.au/tenants)

COVID RESTRICTIONS: Due to the restrictions currently in place due to the Coronavirus outbreak, viewings for properties will be kept to a minimum. As per health regulations any persons entering any property are required to check in using the Qld App. We will be following the recommended social distancing protocols and ask that you do the same. Please make sure you always carry a mask, along with wearing one within the property as per restrictions as and when required. Shield Management apologises for any inconveniences caused but is required to follow all government guidelines within the confines of the restrictions in place for the health and safety of all.

DISCLAIMER: Whilst Shield Management has taken every care in the preparation of the information contained in this advertisement is true and correct, we accept no responsibility and disclaim all liability in respect to any errors, omissions, inaccuracies, or misstatements contained. Any interested parties should make their own inquiries to verify the information contained in this advertisement.

The above information provided has been furnished to us by the vendor/s. We have not verified whether or not that information is accurate and do not have any belief in one way or the other in its accuracy. We do not accept any responsibility to any person for its accuracy and do no more than pass it on. All interested parties should make and rely upon their own inquiries in order to determine whether or not this information is in fact accurate.